

SR-95

BLUE TECH ©



soilmec ©
Drilling and Foundation Equipment

What Drillers Want!

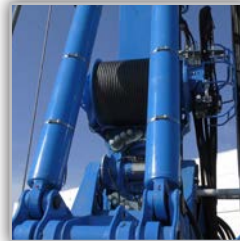
The SR-95 HiT has been upgraded to the Blue Tech version which includes a redesigned operator cabin, new hydraulics and mechanics for an improved efficiency.

Designed around a new energy-saving architecture, the next generation SR-95 Blue Tech is a rig that meets the demands of productivity, flexibility and functionality across all drilling setups and technologies.



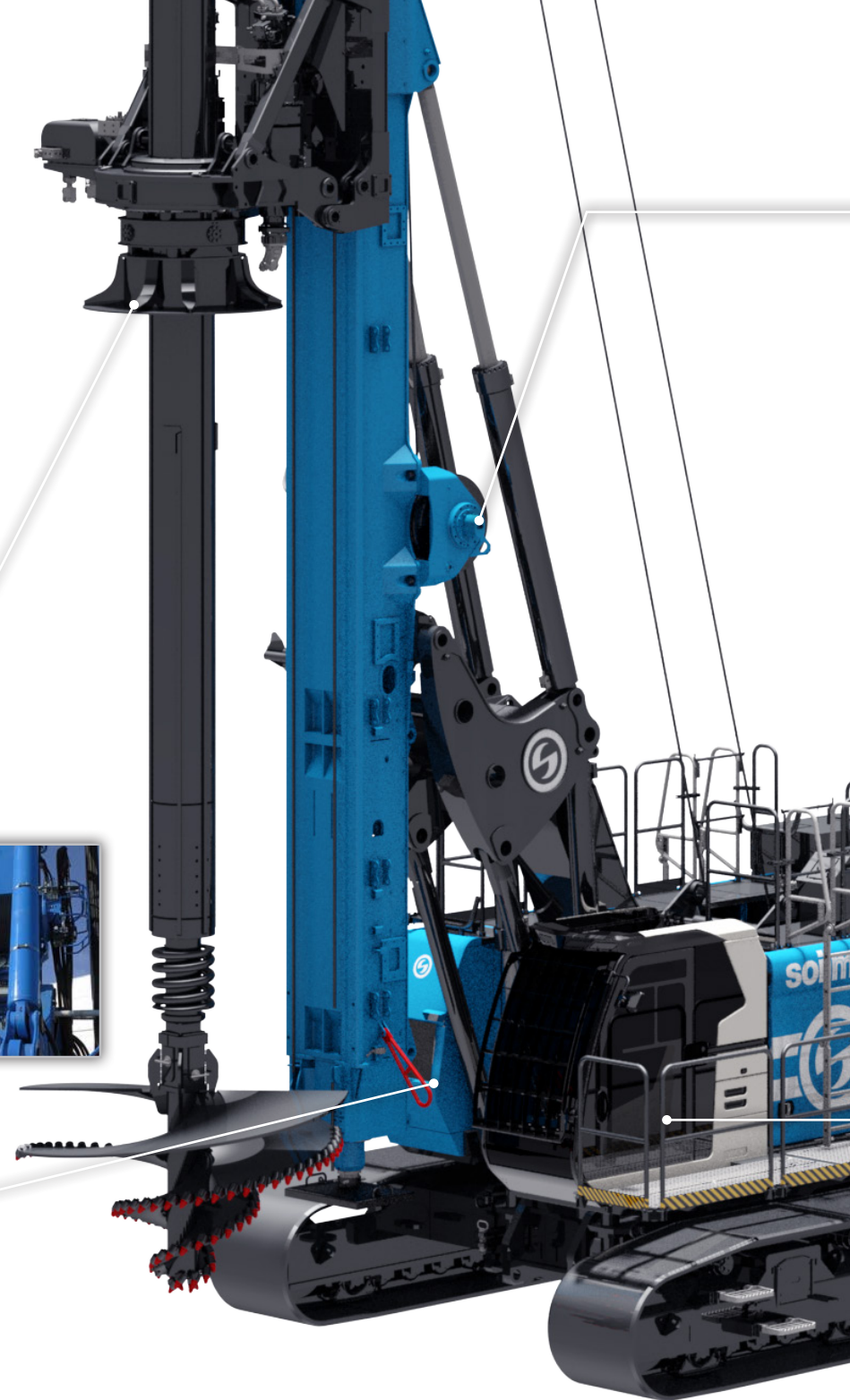
Higher performance

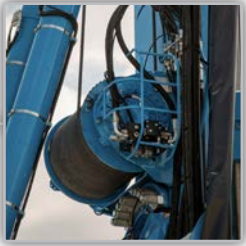
- Automatic control of rotary motors
- Increased extraction force
- + 14% rated torque available



More efficient

- Optimized lines to the rotary for cutting power loss
- Diesel engine – Auto low idle control for fuel saving
- Main pump with Load Sensing system
- Closed circuit on main winch





Truly multipurpose

- 5 technologies: LDP, CFA, DP/TCT, TJ and CAP/CSP/VDW
- Many versions: WCS, CCS, Quick Change, 4-lines pull and the latest ETCW Direct pull and the extended versions.



Environment-friendly

- Complies with the most stringent emission rules
- Lower CO2 emissions
- Improved combustion and cooling efficiency
- Noise reduction



Proven ergonomics

Sliding door, fully adjustable pneumatic suspension seat, new joysticks and keyboards



Great visibility

Polycarbonate roof and stratified front glass allow to work without protection grids, LED lights with anti-glare technology and CCTV camera system with dedicated 7" display



Most comfortable

Powerful HVAC system with recirculating air, USB port, USB or wireless phone charger mount, locked glove boxes (one is air-conditioned), a large compartment for placing helmet and jacket, two dual cupholders and a file folder



Always connected!

DMS On Board 4.0
 DMS PC for a complete production analysis
 DMS Manager a cloud service for superior fleet supervision



SR-95 Blue Tech Is convincing in every aspect

- Higher torque and variable drilling axis feature to drill deeper and bigger piles.
- Powerful stageV Diesel engine with low-idle system and radiators fan control system to reduce fuel consumption and noise.
- The SW350 main winch, available also in single layer version, provides easier handling to the big Kelly bars and offering very high extraction force.





Ready to respond to your every need

- Plug & Play design approach for a faster conversion to any technology
- Machine settings performed by DMS on board
- Direct Quick Change version for a quicker conversion to CFA/DP/TCT/TJ technologies
- Unified cathead in CCS and WCS and CFA Quick Change
- Same foot element for both kelly & CFA
- Two VDW kit for Cased Secant Piles

5 technologies

12 versions

DRILLERS

SR-95 Blue Tech

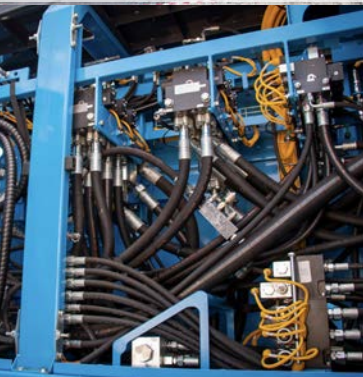
Your safety is our priority

- Improved direct visibility on right-side through new compact hydraulic compartment
- Camera systems for 360° visibility, giving a clear surround view of the rig
- Powerful led lights with antiglare technology
- Cab platform access with handrails
- Lowest noise emission in its segment
- Radio remote control for safer load/unload and tramming operations
- Automatic white sound alarm during rig travelling and turret rotation
- Warning system for sleeve extension coupling for CFA / DP / TJ technologies (patent pending).



SR-95 Blue Tech

The answer to all your job site needs



- **Main winch rope anti-slack.** Managed by DMS, the system indicates when to slow down the kelly bar descent in order to avoid collision with the hole bottom and excessive rope unwinding for longer rope operation life
- **Automatic Mast Raising (Patented).** Automatic tensioning of main and service winch ropes during mast raising and boom adjustment to ease the operations during drilling/transport/maintenance phases
- **Automatic return to centre hole.** Designed to speed up the discharging phase. Very high slewing precision, for a perfect centering of the casing of the kelly bar. One word: faster cycle
- **Locking kelly bar visualization system.** Real time display of locking connection area to simplify the operator job and to protect the rig against wearing and tearing
- **CFA Autodrilling.** An automatic device for CFA mode to control and to optimize the drilling parameters
- **CFA Autorotary (Rotary Revolutions Speed Control).** The operator can activate this function by a dedicated pedal or through joystick
- **CSP Autodrilling.** An automatic device for CAP/ CSP mode to control and to optimize the drilling parameters
- **Drilling axis variation.** Easy and fast conversion
- **Potentiometers main functions** in order to manually set up of the drilling parameters
- **Easy maintenance,** automatic lubrication of all the necessary greasing points in kelly and CFA versions
- **Auxiliary cable support device,** easily accessible by the banksman
- **Rotary cradle sliding guide replaceable** w/o dismantling the rotary

SOILMEC



ERGONOMIA & FUNZIONALITA'

La progettazione e lo sviluppo della cabina sono stati realizzati in conformità ai più recenti criteri di ergonomia, in ossequio agli standard internazionali, per fornire all'operatore il massimo comfort, visibilità e accessibilità.

Interni ed esterni rifiniti con la massima cura.

Accurato posizionamento di controlli/comandi attrezzatura per garantire le massime prestazioni in totale sicurezza.

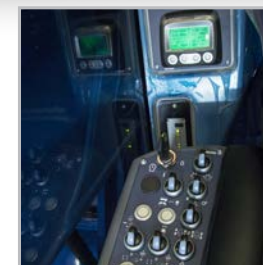
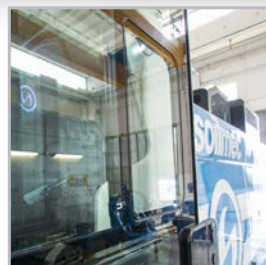
CONNETTIVITA'

DMS ON BOARD con un display touch multilingue da 12" posizionato nella parte superiore della cabina per garantire la massima visibilità dell'area di perforazione.

Scorrimento orizzontale e regolazione dell'inclinazione (optional).

Semplice menu di navigazione e grafica interattiva intuitiva per aiutare l'operatore nella pianificazione ed esecuzione quotidiana della perforazione.

Pulsanti e interruttori si illuminano quando vengono azionati.



Soilmec DMS (Drilling Mate System)

Sistema elettronico per il controllo delle attrezzature di perforazione, supervisione della produzione e gestione della flotta sviluppato e di proprietà di Soilmec dalla fine degli anni '90.

DMS product suite

Soluzione integrata che abbraccia la tecnologia intelligente per ottimizzare l'uso delle attrezzature e aumentare l'efficienza nei cantieri. Il DMS aiuta a ottenere informazioni uniche sull'ingegneria del suolo e sulle attività di palificazione, raccogliendo, analizzando e gestendo le informazioni più rilevanti dalle attrezzature di perforazione.

Il sistema ha lo scopo di supportare le società di costruzioni nelle operazioni quotidiane e nei processi aziendali migliorando il processo decisionale e sfruttando il potenziale dell'analisi dei dati.

DMS ON BOARD



Strumentazione integrata per la supervisione delle attrezzature e il controllo delle prestazioni.

DMS PC



Software con licenza per l'elaborazione e il reporting dei dati di macchina e di produzione.

DMS MANAGER 4.0



App cloud per la gestione di risorse, flotte e cantieri.



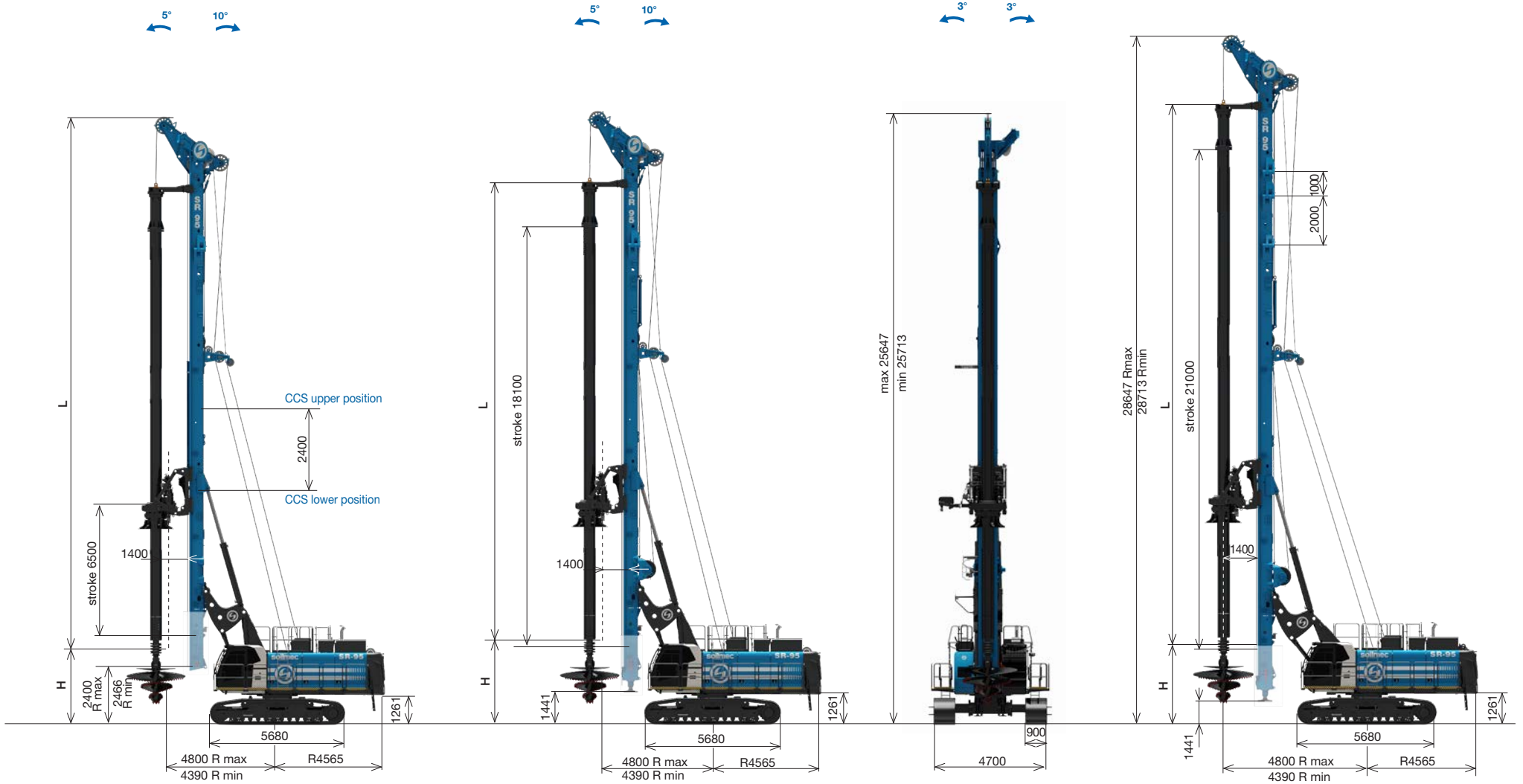
DRILLING MATE SYSTEM

Large Diameter Piles

Cylinder Crowd System

Winch Crowd System

Extended version



LDP - Large Diameter Piles - CCS version		
Operating weight w/o kelly bar	91700 kg	202164 lb
Max pile diameter (tool in front of the mast)	2100 mm	83 in
Max pile diameter c/w increased drilling axis (tool in front of the mast)	2700 mm	106 in
Max pile diameter w/o lower mast section ¹ (tool below the mast)	3000 mm	118 in
Max pile diameter c/w increased drilling axis & w/o lower mast section ¹ (tool below the mast)	3600 mm	142 in
Working radius ³	4090 - 4800 mm	164 - 192 in
Tail swing radius	4565 mm	180 in
Max pile depth - friction kelly	89 m	292 ft
Max pile depth - locking kelly	70 m	230 ft

LDP - Large Diameter Piles - WCS version		
Operating weight w/o kelly bar	93800 kg	206794 lb
Max pile diameter (tool in front of the mast)	1900 mm	75 in
Max pile diameter c/w increased drilling axis (tool in front of the mast)	2500 mm	98 in
Max pile diameter w/o lower mast section ² (tool below the mast)	3000 mm	118 in
Max pile diameter c/w increased drilling axis & w/o lower mast section ² (tool below the mast)	3600 mm	142 in
Working radius ³	4090 - 4800 mm	164 - 192 in
Tail swing radius	4565 mm	180 in
Max pile depth - friction kelly	89 m	292 ft
Max pile depth - locking kelly	70 m	230 ft

LDP - Large Diameter Piles - Extended version ⁴		
Operating weight - w/o kelly bar - CCS version	93800 kg	206794 lb
Operating weight - w/o kelly bar - WCS version	95900 kg	211423 lb
Max pile depth - locking & friction kelly	81,4 - 101,7 m	267 - 334 ft

¹ cylinder crowd in upper position, depth reduced by 2,4 m (7.8 ft)

² rotary stroke and depth reduced by 2,4 m (7.8 ft)

³ working radius with increased drilling axis: 4390 - 4800 mm (173 - 189 in)

⁴ special package with mast extension on request

Kelly bars for LDP

Kelly type	Kelly dimens.	Drilling Deph ¹		Weight	L	H ⁵								
		m	ft			t t(US)	m	ft	m	ft	m	ft		
3 parts ²	BL HD	3 x 10,5	27,6	90.6	6,6	7.0	12,0	39.4	8,2	26.9	10,6	34.8	14,1	46.3
	BL HD	3 x 13,5	36,9	121.1	8,0	8.8	15,1	49.5	8,2	26.9	10,6	34.8	11,0	36.1
	BL HD	3 x 15,5	43,2	141.7	8,9	9.8	17,1	56.1	8,2	26.9	9,0	29.5	9,0	29.5
	BL HD	3 x 16,5	46,0	150.9	9,4	10.4	18,1	59.4	8,0	26.2	8,0 ⁴	26.2	8,0	26.2
	BL HD	3 x 18,5	52,3	171.6	10,4	11.8	20,2	66.3	5,9	19.4	5,9 ⁴	19.4	5,9	19.4
	BL HD ⁴	3 x 20	55,9	183.4	11,1	12.2	21,4	70.2	4,7	15.4	-	-	4,7	15.4
4 parts ²⁻³⁻⁶	BL HD ⁴	3 x 21,5	60,9	199.8	11,8	13.0	23,0	75.5	3,1	10.2	-	-	3,1	10.2
	BL HD	4 x 10,5	37,2	122.0	6,9	7.6	12,0	39.4	8,2	26.9	10,6	34.8	14,1	46.3
	BL HD	4 x 13,5	49,5	162.4	8,4	9.3	15,1	49.5	8,2	26.9	10,6	34.8	11,0	36.1
	BL HD	4 x 15,5	57,6	189.0	9,4	10.4	17,1	56.1	8,2	26.9	9,0	29.5	9,0	29.5
	BL HD	4 x 16,5	61,5	201.8	9,9	10.9	18,1	59.4	8,0	26.2	8,0 ⁴	26.2	8,0	26.2
	BL HD	4 x 18,5	69,9	229.3	11,0	12.1	20,2	66.3	5,9	19.4	5,9 ⁴	19.4	5,9	19.4
	BL HD ⁴	4 x 19,5	74,0	242.8	11,5	12.7	21,1	69.2	5,0	16.4	-	-	5,0	16.4
	BL HD ⁴	4 x 20	74,7	245.1	11,7	12.9	21,4	70.2	4,7	15.4	-	-	4,7	15.4
	BL HD ⁴	4 x 21,5	81,4	267.1	12,5	13.8	23,0	75.5	3,1	10.2	-	-	3,1	10.2
	5 parts ³	FR HD	5 x 10,5	46,6	152.9	7,7	8.4	12,0	39.4	8,2	26.9	10,6	34.8	14,1
FR HD		5 x 13,5	62,4	204.7	9,5	10.5	15,1	49.5	8,2	26.9	10,6	34.8	11,0	36.1
FR HD		5 x 15,5	72,3	237.2	10,8	11.9	17,1	56.1	8,2	26.9	9,0	29.5	9,0	29.5
FR HD		5 x 16,5	77,0	252.6	11,4	12.6	18,1	59.4	8,0	26.2	8,0 ⁴	26.2	8,0	26.2
FR HD		5 x 18,5	87,5	287.1	12,7	14.0	20,2	66.3	5,9	19.4	5,9 ⁴	19.4	5,9	19.4
FR HD ⁴		5 x 19	88,9	291.7	13,0	14.3	20,4	66.9	5,7	16.4	5,7 ⁴	16.4	5,7	16.4
FR HD ⁴		5 x 20	94,2	309.1	13,6	15.0	21,4	70.2	4,7	15.4	-	-	4,7	15.4
FR HD ⁴		5 x 21,5	101,7	333.7	14,6	16.0	22,9	75.1	3,2	10.2	-	-	3,2	10.2

¹ drilling depth is calculated with kelly bar c/w stub 200x200 & drilling tool 1500 mm (4.9 ft) long; drilling depth is reduced by 2.4 m (7.8ft) without lower mast section or CCS in upper position; drilling depth is reduced by 0.1 m (0.33ft) with increased drilling axis.

² friction type is also available with the same dimension

³ rotary torque derated

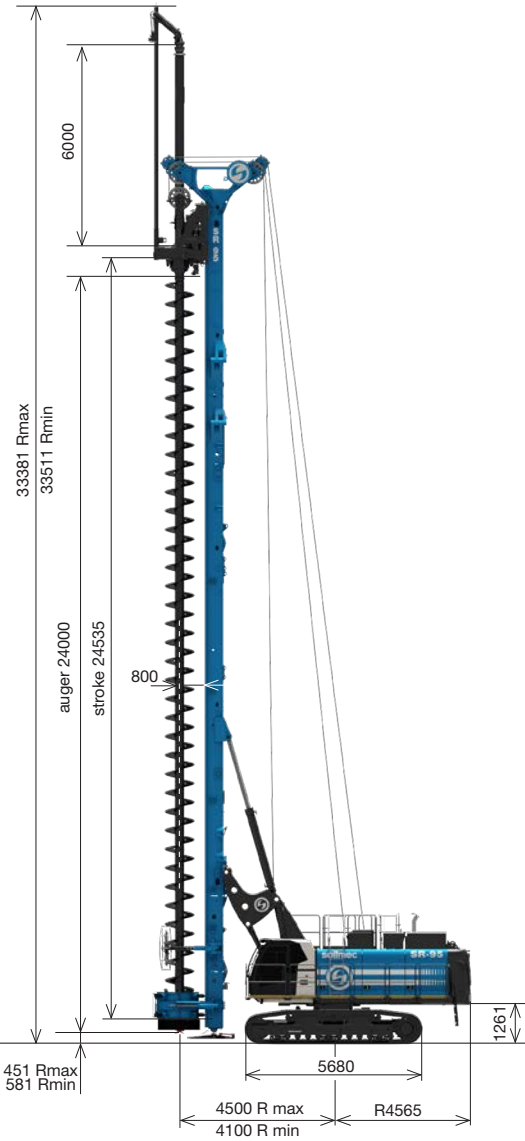
⁴ available only c/w 3 m (9.8 ft) mast extension kit

⁵ clearance c/w 3 m (9.8 ft) mast extension kit.

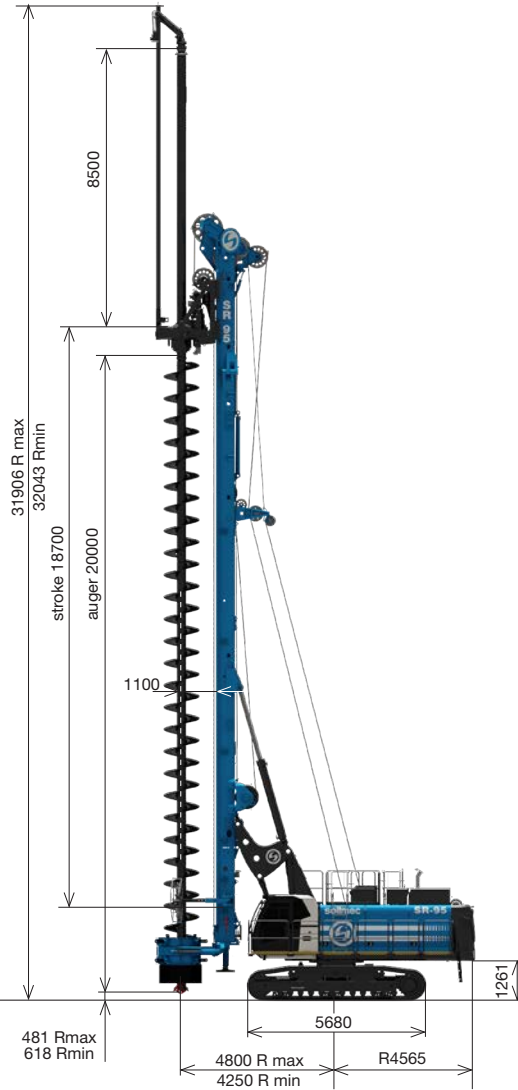
⁶ data referred to kelly "full depth" type; available "full torque" type..

CFA / DP / TJ applications

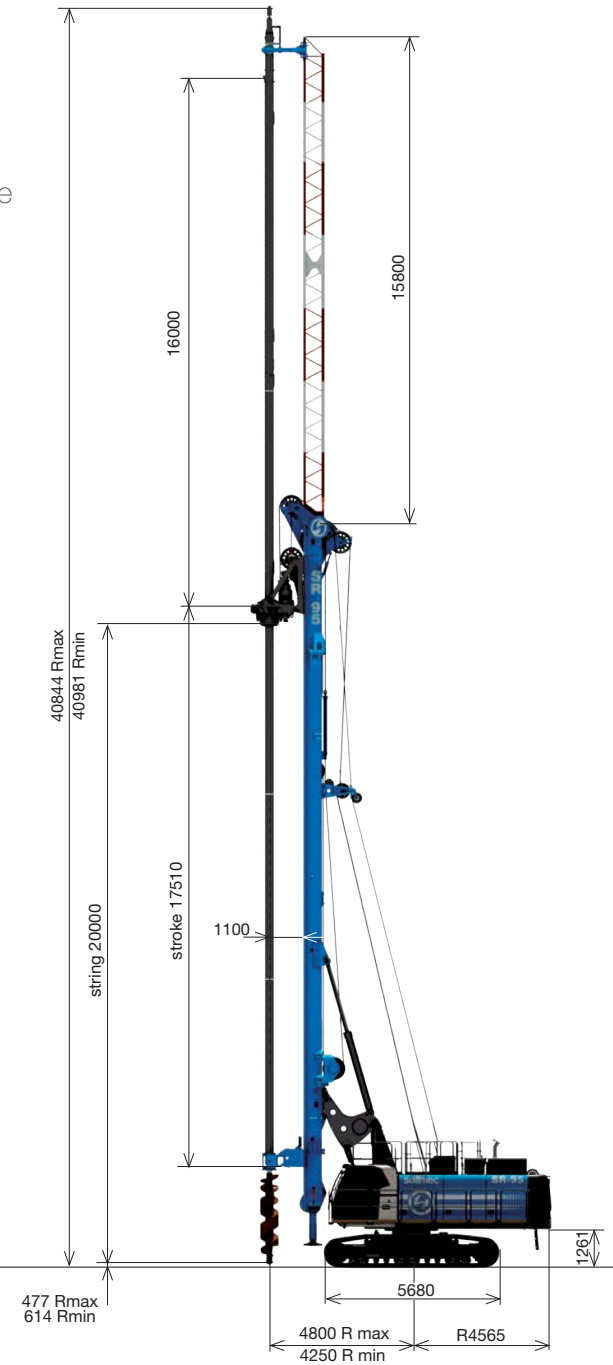
CFA
4-lines pull



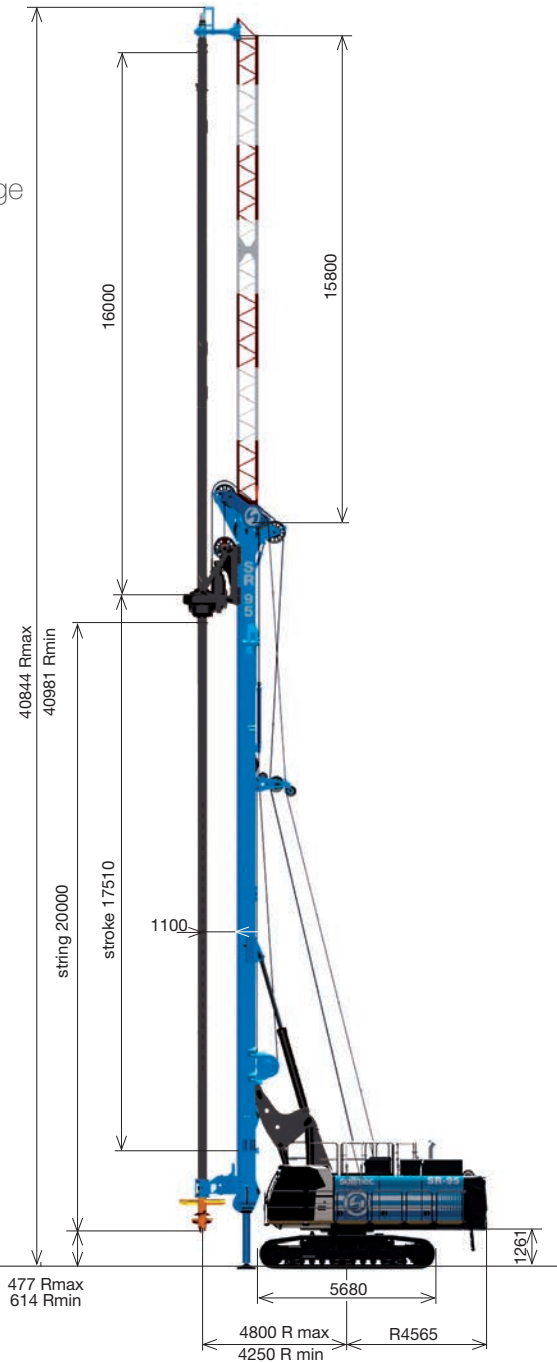
CFA
Quick Change



DP / TCT
Quick Change



TJ
Quick Change



CFA - Continuous Flight Auger - 4-lines pull	standard version		extended version ³	
Operating weight (c/w 6 m - 20 ft sleeve extension, w/o auger)	96000 kg	211644 lb	96500 kg	212746 lb
Max pile diameter	1200 mm	47 in	1200 mm	47 in
Max length of auger	24 m	79 ft	26 m	85 ft
Max length of sleeve extension	8,5 m	28 ft	8,5 m	28 ft
Max pile depth (c/w 8,5 m - 28 ft sleeve extension) ¹	32,5 m	107 ft	34,5 m	113 ft
Nominal extraction force	1110 kN	249534 lbf	1110 kN	249534 lbf
Additional crowd force on auger ²	100/484 kN	22481/108806 lbf	100 / 484 kN	22481/108806 lbf

CFA - Continuous Flight Auger - Quick change	standard version		extended version ³	
Operating weight (c/w 8,5 m - 28 ft sleeve extension, w/o auger)	96700 kg	213187 lb	98800 kg	217817 lb
Max pile diameter	1200 mm	47 in	1200 mm	47 in
Max length of auger	20 m	66 ft	23 m	75 ft
Max length of sleeve extension	8,5 m	28 ft	8,5 m	28 ft
Max pile depth (c/w 8,5 m - 28 ft sleeve extension) ¹	26,5 m	87 ft	29,5 m	97 ft
Nominal extraction force	1000 kN	224805 lbf	1000 kN	224805 lbf
Additional crowd force on auger	484 kN	108806 lbf	484 kN	108806 lbf

CFA - Continuous Flight Auger - Direct Quick change	standard version		extended version ³	
Operating weight (c/w 8,5 m - 28 ft sleeve extension, w/o auger)	96500 kg	212746 lb	98600 kg	217376 lb
Max pile diameter	1200 mm	47 in	1200 mm	47 in
Max length of auger	20 m	66 ft	23 m	75 ft
Max length of sleeve extension	8,5 m	28 ft	8,5 m	28 ft
Max pile depth (c/w 8,5 m - 28 ft sleeve extension) ¹	26,5 m	87 ft	29,5 m	97 ft
Nominal extraction force	484 kN	108806 lbf	484 kN	108806 lbf
Additional crowd force on auger	484 kN	108806 lbf	484 kN	108806 lbf

DP - Displacement pile - Quick change ⁴	standard version		extended version ³	
Max recommended DP/TCT pile diameter	600 mm	24 in	600 mm	24 in
Max recommended TCT pile diameter	800 mm	31.50 in	800 mm	31.50 in
Max length of string	20 m	66 ft	23 m	75 ft
Max pile depth w/o lattice boom extension c/w 8,5 m (27.8 ft) string extension	25,5 m	84 ft	28,5 m	94 ft
Lattice boom extension length	16 m	52 ft	n.a.	n.a.
Max pile depth c/w lattice boom extension	33 m	108 ft	n.a.	n.a.

TJ - Turbo jet - Quick change ⁴	standard version		extended version ³	
Max recommended TJ pile diameter	1900 mm	75 in	1900 mm	75 in
Max length of string	20 m	66 ft	23 m	75 ft
Max pile depth w/o lattice boom extension c/w 6 m (19,6 ft) string extension	23 m	75 ft	26 m	85 ft
Lattice boom extension length	16 m	52 ft	n.a.	n.a.
Max pile depth c/w lattice boom extension	33 m	108 ft	n.a.	n.a.

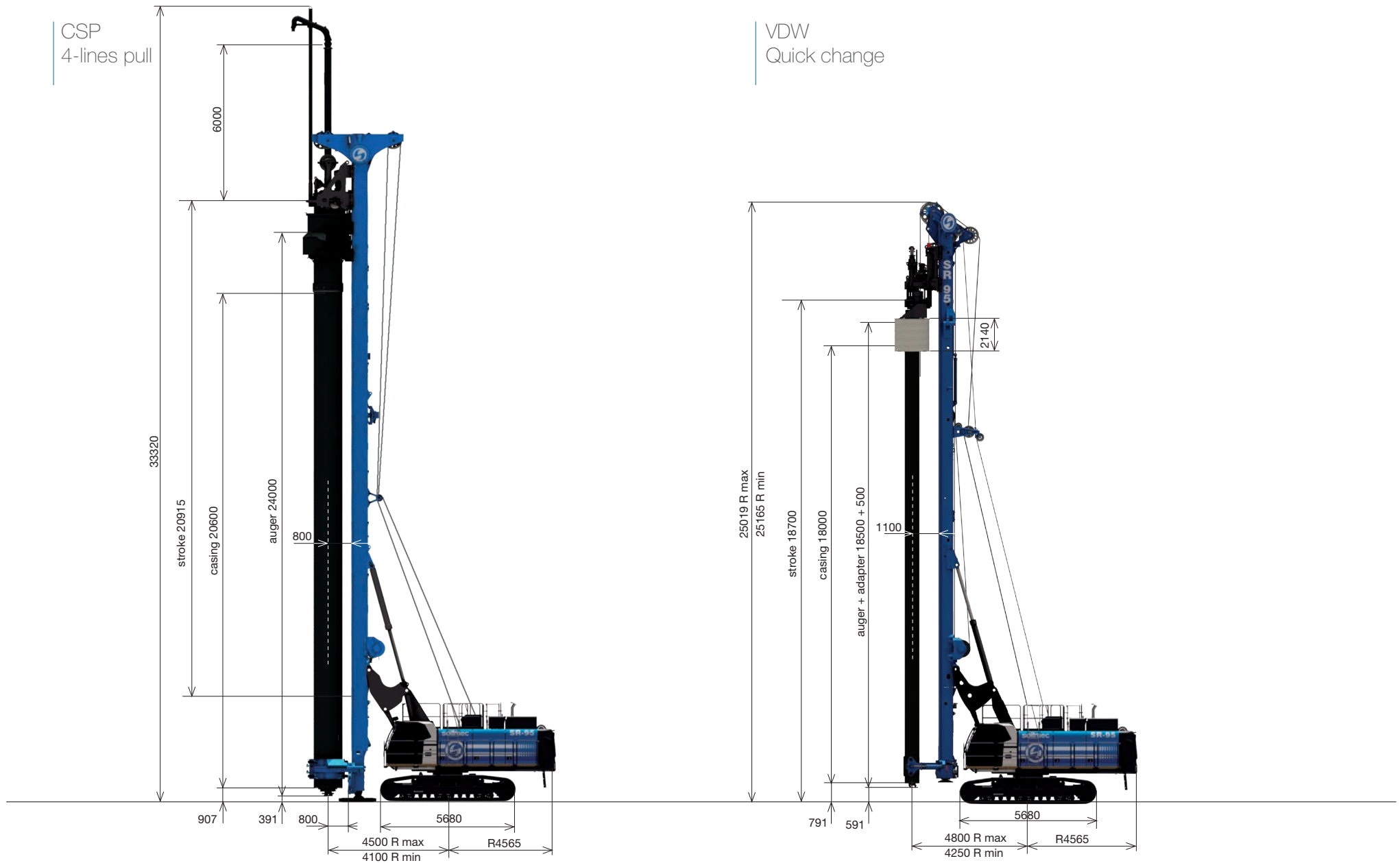
¹ depth reduced by 1,5 m (4.9 ft) with hydraulic auger cleaner

² depth reduced by 0,2 m (0.66 ft) with 100 kN - by 1,4m (4.5 ft) with 484 kN

³ special package with mast extension on request

⁴ DP/TCT and TJ are also available with 4-lines pull version

CSP / VDW applications



CSP - Cased secant piles - 4-lines pull ¹		
Max pile diameter	800 / 1000 ² mm	31.5 / 39.1 ² in
Max augered depth (c/w 6 m - 19.7 ft auger extension)	26,3 m	87 ft
Max cased depth	19,7 m	65 ft
Auger max torque (intermittent)	250 kNm	184387 lbf*ft
Max auger speed rotation	26,3 rpm	25.4 rpm
Auger pull up/down	1110 / 332 kN	249534 / 74635 lbf
Casing max torque (intermittent)	252,6 kNm	185863 lbf*ft
Max casing speed rotation	5 rpm	5 rpm
Casing pull up/down	816 ³ kN	183441 / 108806 lbf

VDW 2010 - Cased secant piles - Quick change	standard version		extended version ³	
Operating weight (w/o auger and casing)	95400 kg	209437 lb	97800 kg	214287 lb
Max pile diameter	800 mm	31.50 in	600 / 800 ² mm	23.6 / 31.52 ² ft
Max augered depth w/o auger cleaner	18 m	59 ft	21 m	69 ft
Max cased depth w/o auger cleaner	17,8 m	58 ft	20,8 m	68 ft
Casing max torque	203 kNm	147510 lbf*ft	203 kNm	147510 lbf*ft
Max casing speed rotation	18 rpm	20 rpm	18 rpm	20 rpm
Auger max torque	101,4 kNm	73755 lbf*ft	101,4 kNm	73755 lbf*ft
Max auger speed rotation	37,9 rpm	40 rpm	37,9 rpm	40 rpm
VDW pull up/down	850 / 484 kN	191084 / 108806 lbf	850 / 484 kN	191084 / 108806 lbf

¹ 17,3 t (30140 lb) counterweight is required

² special undercarriage required

³ special package with mast extension on request

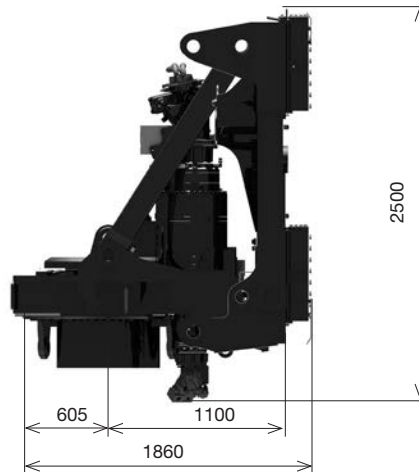
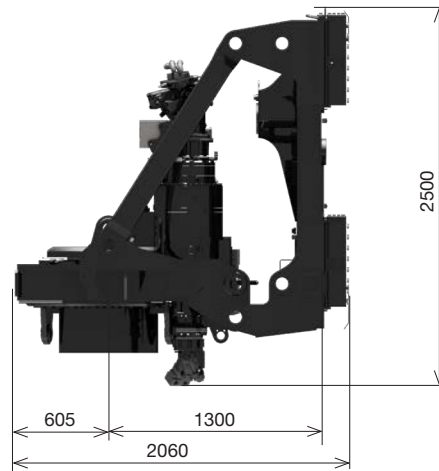
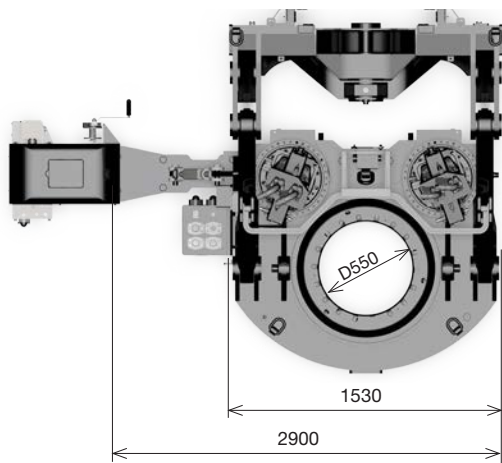
The SR-95 Blue Tech has a very wide offer for the cased augered piles technology.

The rig can be fitted with the "classic" CAP/CSP system developed by Soilmecc or with the new VDW system.

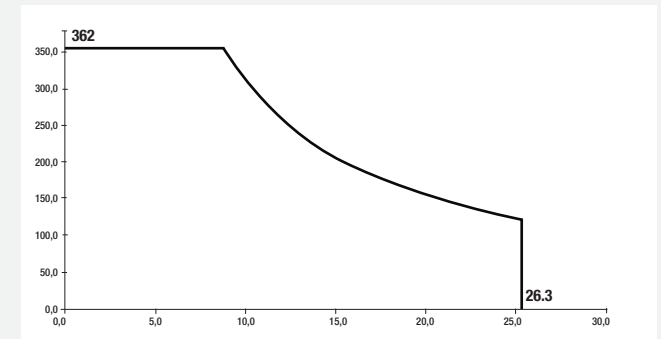
The CAP/CASP system, with the machine in 4-lines pull version, enables you to get the higher performance thanks to the independent rotaries and a very high extraction force.

The VDW system ensure an easy conversion from quick change and allows a front of wall minimum distance.

Rotary



Rotary torque diagram



Kelly bars for rotary OD 482 mm / 19 in

Rotary motors displacement automatic controlled by DMS.

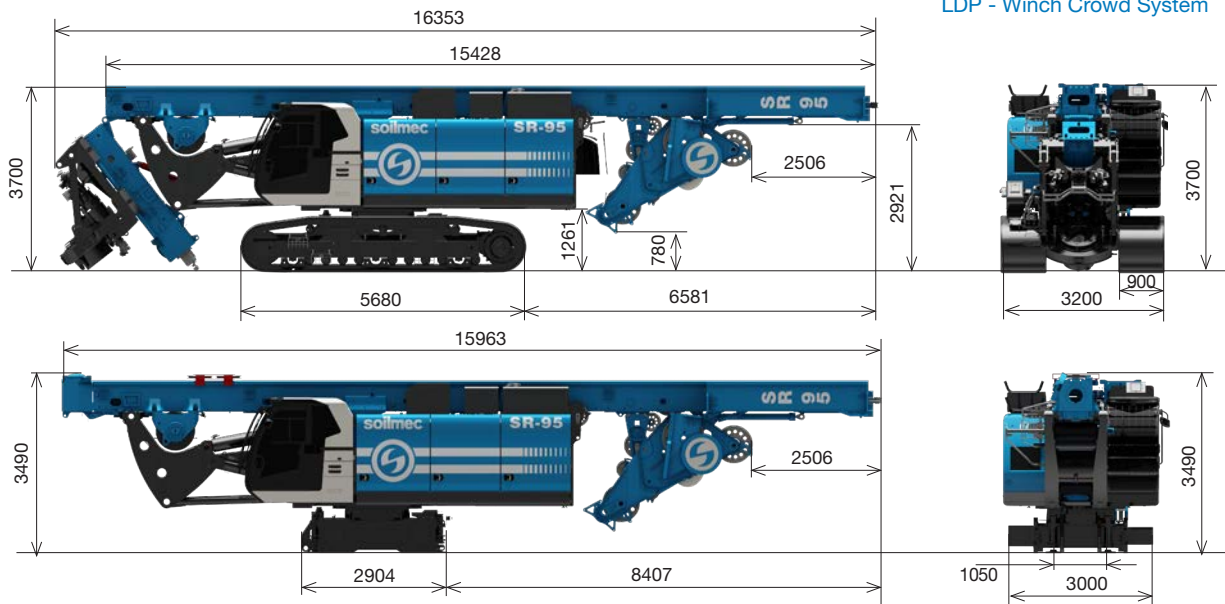
Engine power saving in a resulting lower consumption thanks the contribution of the main valve fitted on rotary

The rotary sleeve is composed of symmetrical and interchangeable ribs in order to reduce maintenance time. The inner passage is 550 mm (21.6 in) without ribs.

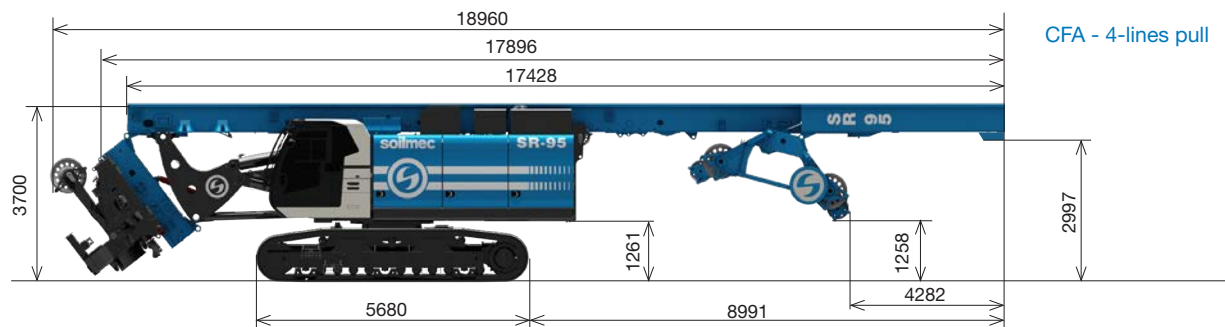
The variable drilling axis device (from 1100 mm to 1400 mm / 45 in to 55 in) ensures the maximum geometric clearance in front of the mast (CCS up to diameter 2700 mm / 106 in - WCS up to diameter 2500 mm / 98 in)

Type		
Max torque	362,4 kNm	267292 lbf·ft
1 st gear rated torque	342 kNm	252246 lbf·ft
Max drilling speed	26,3 rpm	26.3 rpm
Max spin off speed	120 rpm	120 rpm
Weight (w/o cradle and casing flange)	5040 kg	11111 lb

Transport, dimensions & weights



LDP - Winch Crowd System



CFA - 4-lines pull

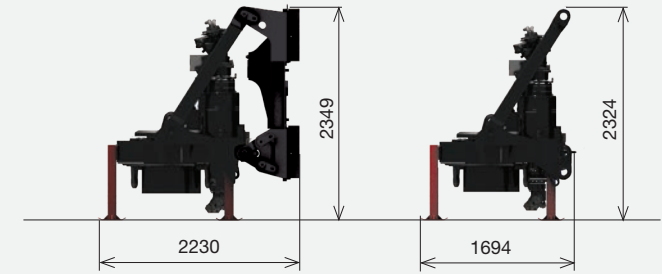
Transport configuration		
Width c/w - w/o crawlers ¹	3200 - 3000 mm	126 - 118 in
Height c/w - w/o crawlers ²	3700 - 3350 mm	148 - 134 in
Length CCS version c/w rotary, w/o rotary ³	16350 - 15900 mm	644 - 626 in
Length WCS version c/w rotary, w/o rotary ³	16350 - 16350 mm	644 - 644 in
Length CFA version Quick Change - lines pull	16590 - 18960 mm	653 - 746 in
Weight CCS version c/w rotary, w/o counterweight - min configuration ⁴	72800 - 46000 kg	160496 - 101413 lb
Weight WCS version c/w rotary, w/o counterweight - min configuration ⁴	76300 - 54600 kg	168213 - 120372 lb
Weight CFA version c/w rotary, w/o counterweight - w/o rotary, counterweight, crawlers	76900 - 55200 kg	169535 - 121695 lb

¹ 3400 - 3000 (134 - 118 in) c/w special undercarriage

³ for extended version, add. 2000 mm (79 in)

² 3750 - 3400 (149 - 134 in) c/w special undercarriage

⁴ for extended version, add. 2200 kg (4850 lb)



Transport configuration	Rotary	
Weight	4780 kg	14727 lb
Width w/o cradle	2456 mm	97 in



Transport configuration	Counterweight	
Transport weight	15100 kg	33289 lb
Thickness	895 mm	35 in



Transport configuration	Crawler	
Transport weight for each element ¹	8000 kg	17637 lb
Thickness	900 mm	35 in

¹ 9000 kg (19842 lb) c/w special undercarriage

Technical data

Undercarriage



Undercarriage		
Type	variable gauge, telescoping removable sides	variable gauge, telescoping removable sides
Overall width with retracted/extended crawlers	3200 / 4700 mm	126 / 185 in
Width of triple grouser track shoes	900 mm	35.4 in
Overall length of crawlers	5680 mm	224 in
Traction force	668 kN	150172 lbf
Travelling speed	1,9 km/h	1.2 mph
Special undercarriage - CSP & TJ version		
Type	variable gauge, telescoping removable sides	variable gauge, telescoping removable sides
Overall width with retracted/extended crawlers	3400 / 5000 mm	134 / 197 in
Width of triple grouser track shoes	900 mm	35.4 in
Overall length of crawlers	5968 mm	235 in
Traction force	771 kN	173328 lbf
Travelling speed	1,65 km/h	1.03 mph

Engine



Engine		
Engine model ¹	Cummins X15	Cummins X15
Power rating	455 kW @ 1900 rpm	610 HP @ 1900 rpm
Engine conforms to Exhaust emission Standard	EU stage V, US EPA Tier 4f	EU stage V, US EPA Tier 4f
Fuel tank capacity	870 l	230 US gal
AD Blue tank capacity	56,8 l	15 US gal

¹ CAT C15 - Tier3 is available on request

Hydraulic system



Hydraulic system		
Main pumps flow	518 / 2x 358 l/min	137 / 2x 96 US gal/min
Auxiliary pumps flow	148 l/min	39 US gal/min
Hydraulic oil tank capacity	880 l	232 US gal

Crowd system

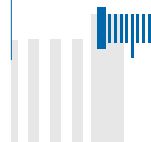


CCS_Cylinder Crowd System		
Stroke	6500 mm	256 in
Crowd force pull (down/up)	280 / 365 kN	62945 / 82054 lbf
Speed up (slow/fast)	3,7 / 10,8 m/min	12 / 35.4 ft/min
Speed down (slow/fast)	3,5 / 11 m/min	11.5 / 36 ft/min

WCS_Winch Crowd System		
Stroke ²	18800 mm	740 in
Crowd force pull (down/up)	484 / 484 kN	108800 / 108800 lbf
Speed up (slow/fast)	6 / 26 m/min	19.7 / 85.3 ft/min
Speed down (slow/fast)	6 / 26 m/min	19.7 / 85.3 ft/min

² stroke 21100 mm (831 in) with 3 m (10 ft) mast extension is available on request

Winches



Main winch - standard		
Type	controlled descent	controlled descent
Rope layers	3	3
Line pull (1 st layer)	352 kN	79133 lbf
Rope diameter	32 mm	1.26 in
Rope speed (1 st layer)	80 m/min	263 ft/min

Main winch - single layer (on request)		
Type	controlled descent	controlled descent
Line pull	350 kN	78683 lbf
Rope diameter	32 mm	1.26 in
Rope speed	80 m/min	263 ft/min

Auxiliary winch		
Type	controlled descent	controlled descent
Rope layers	2	2
Line pull (1 st layer)	134 kN	30124 lbf
Rope diameter	22 mm	0.87 in
Rope speed (1 st layer)	70 m/min	230 ft/min

Noise



Noise		
Sound power level c/w Tier 4f Engine c/w Tier 4f EU Stage V, US EPA Engine	108 dB	108 dB
Sound pressure level in cab c/w Tier 4f EU Stage V, US EPA Engine	70 dB	70 dB
Vibration transmitted to the hand-arm system of the machine operator	< 2,5 m/s²	< 8.2 ft/s ²
Vibration transmitted to the whole body of the machine operator	< 0,5 m/s²	< 1.67 ft/s ²

H-cab



Soilmecc H-cab. By assessing the specific application and listening properly to the wishes and requirements of the operators, Soilmecc provides the optimal operator cabin for comfort. Ergonomic seat with air suspension, fully adjustable, lumbar support, air management, as well as lines of sight, quality and safety are standard aspects considered during the design of the right configuration for the cabin.

- Cabin width **1050 mm** 3.4 ft
- Sliding door, Courtesy lights, Air conditioning system and climate control unit, Radio player with USB aux port

Controls



DMS control system, developed and manufactured by Soilmecc - is designed to give you a total control over performance, production and all your drilling rigs. In real time all the information relating to the operation work cycles and diagnostics of faults are shown on a multilanguage touch screen display installed in the cab.

All drilling operations are actuated by two innovative joysticks.

Automatic controls of rotary head and drilling phases are available on request thanks to simple implementation of our DMS system.

Configurations

UNDERCARRIAGE

Variable gauge, telescopic removable sides	●
Stabilizers cylinders	●
Hydraulic prearrangement for casing oscillator	○
Mechanical prearrangement for casing oscillator	●
VRM200KL casing oscillator	○
Radio remote control for tramping operation	●
Radio remote control for dismounting track	○
Machine anchor points for transport	●

UPPER STRUCTURE

Diesel engine CAT C15 ACERT EU Stage IIIA – US EPA Tier 3	○
Diesel engine Cummins X15 EU Stage V – US EPA Tier 4F	●
Start and slow system	●
Electroproportional system	●
Harness technology for electrical system	●
Automatic greasing package	○
Compressor kit	○
Electro-proportional system	○
Washer lance	○
Removable catwalk 900 mm (35.4 in) wide c/w handrails	●
Foldable catwalk 900 mm (35.4 in) wide c/w handrails	○
Acoustic alarm for tramping	●
Lighting led system package	●
Sound proofed canopies	●
Silent pack	○
Hydraulic prearrangement for additional technologies	●

H-CAB

Front protective grille	●
Falling object protective structure (FOPS)	●
Lower front protective grille	○
Rearview mirrors	●
Comfort package (cup holder, radio, A/C system, USB port & 12 V power socket, roll-up awning, courtesy lights)	●
Operator seat (air suspension, lumbar support, fully adjustable positioning, safety belt & operator presence micro-switch)	●
Sliding door	●
Sliding window	○
Lighting system in front of the cab	●
Front tools support	○

CONTROL AND MONITORING SYSTEM

DMS ON BOARD with technological package	●
DMS PC	●
DMS manager 4.0	○
GSM / GPRS / WIFI Modem	●
DMS ON BOARD adjustable monitor 12" touch screen	●
Video control by 5 cameras with display in the cab	●
Inclinometer device with automatic verticality	●

WINCHES

Main winch SW350 model - multi layers	●
Main winch SW350 model - single layer	○
Load cell for main winch	○
Limit switch for rope winding and winches	●
Depthmeter for main winch	●
Anti-slack system for main winch	○
Service winch SW130 model	●
Load cell for service winch	●
Swivel for auxiliary winch	○
Service rope holder	●

ROTARY UNIT

Rotary unit RD 340 model	●
Max torque intermitted: 351 kNm (258880 lbs*ft)	●
Replaceable drive ribs	●
Automatic greasing kit for cradle	●
Automatic control of motor displacement	●
Oil discharge conveying system	●

MAST

Upper foldable mast element	●
Lower foldable mast element	●
Automatic greasing package for cathead	○
Hydraulic cathead folding kit	●
Hydraulic upper mast folding kit	○
Double positioning of cylinder	●

KELLY BAR TECHNOLOGY

Rotary sleeve with 3 ribs	●
Cardan joint	●
Flange for casing driving d. 1500 mm (59 in)	●
Automatic return to the centre hole	○
Automatic greasing kit for winch crowd	○

Telescopic mast foot (only for WCS)	●
Variable Drilling axis from 1100 mm (43 in) to 1400 (55 in)	●
Package for long mast - upgraded version	○
Spin off discharging system	●
"Click-click" discharging system	●
Kelly bar guide	●

CFA TECHNOLOGY

Sleeve 6 m (19.7 in) long 25HD-5	○
Sleeve 8,5 m (27.8 in) long 25HD-5	○
Package for CFA quick change & direct quick change	●
Package for CFA 4-lines pull	○
DMS ON BOARD with automatic auger lifting	●
Concrete pipe on turret and mast	○
Autodrilling package	●
Autorotary package	●
Automatic greasing kit for sheeves block	○
Additional pull-down winch	○
Hydraulic universal openable lower guide Ø 1200mm (47.2 in)	●
Auger cleaner star type	●
Double roller auger cleaner Ø 1200 mm (47.2 in)	○
Wi-Fi pressure transducer kit for concrete line	○
Pressure transducers kit	●
Hydraulic prearrangement for VTH-1 vibrator	○
Warning system for CFA sleeve extension coupling (patent pending)	●

OTHER TECHNOLOGIES

CSP technology for 4-lines pull version	○
Special undercarriage for CSP version	○
VDW tech.for Quick Change std and Direct Quick Change version	○
DP/TCT tech.for Quick Change std and Direct Quick Change ver.	○
TJ tech.for Quick Change std and Direct Quick Change version	○

● standard

○ optional

* The technology package is only referred to the machine set up in this specific version



www.soilmec.it

This brochure has been edited and distributed by SOILMEC Spa. The present document cancels and override any previous ones. This brochure shall not be distributed, reproduced or exhibited without SOILMEC Spa. authorization in accordance with to SOILMEC web site disclaimer condition.

SOILMEC Spa distributes machinery and structures all over the world, supported by SOILMEC Spa subsidiary companies and dealers. The complete Soilmec network list is available on the web site www.soilmec.it

#muddyboots